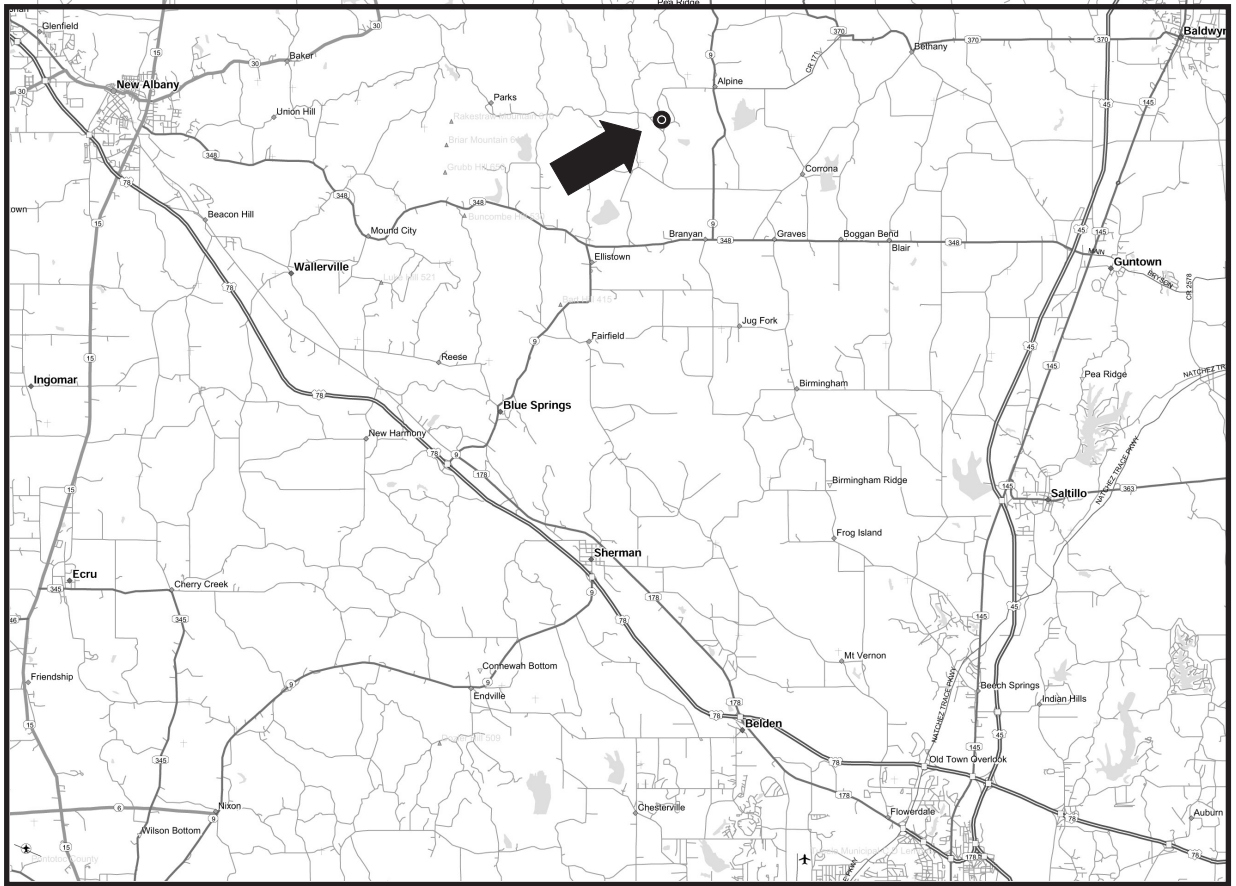


Alpine Mini Farms

Union County Mississippi



To see from Tupelo: From Hwy. 78 and 45, take Hwy. 45 north 11 miles to Guntown. Turn left on Hwy 348 (Main Street) and go 7.3 miles to State Route 9. Turn right (north) and go 3.2 miles to County Road 171 (there is no sign, but there is a closed country store here). Turn left on C.R. 171 and go 1.5 miles to C.R. 225 (No sign). Turn left on 225, go 1,200 feet and see signs.

To see from Blue Springs exit: Take S.R. 9 north 12 miles to C.R. 171. Follow instructions above.

To see from New Albany: From 15 and 348 go east on 348 about 11 miles to S.R. 9. Turn left, go 3.2 miles to C.R. 171. Follow instructions above.

Only \$495 Down!

Newer mobile homes welcome

Water Line • Deed Restrictions

Owner Financing

Warranty Deed! No Closing Costs

East Union Schools!

Frank M. Hurdle, owner

P.O. Box 189

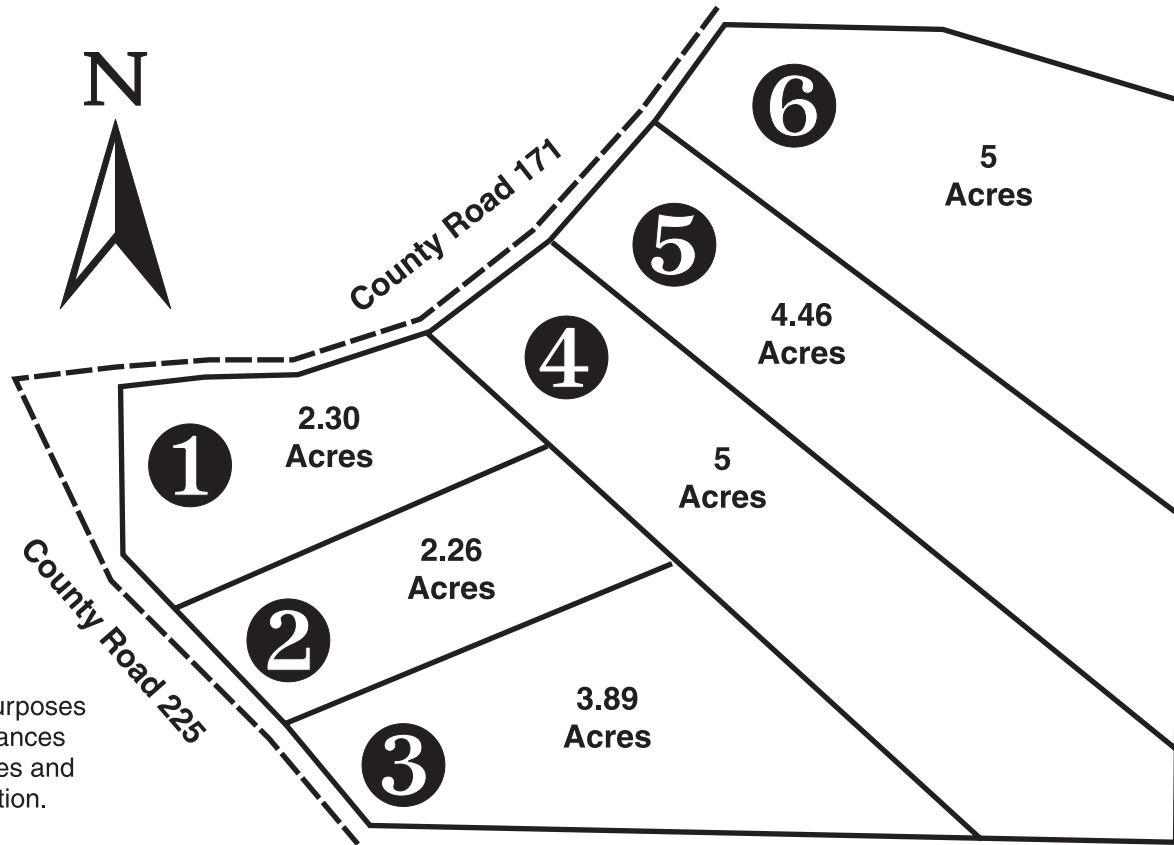
Holly Springs, MS 38635

662-252-3707



Alpine Mini Farms

Union County, Mississippi • East Union Schools



This plat is for informational purposes only. All conveyances shall be by metes and bounds description.

Deed Restrictions

- 1. No mobile homes over 10 years old at time of placement.
- 2. No junk cars or other junk of any type. Boats, tractors, etc. Must be parked behind residence when not in use.
- 3. No swine are permitted, including miniature pigs.
- 4. A proper sanitation system must be put into place. Outhouses are prohibited.

Farm #	Acres	Price	Mo. Pmt.
1	2.38	\$10,995	\$115.61
2	2.26	\$8,995	\$93.59
3	3.89	\$10,995	\$115.61
4	5.0	\$11,995	\$126.62
5	4.46	\$11,995	\$126.62
6	5.0	\$12,995	\$137.64

Frank M. Hurdle, owner
P.O. Box 189
Holly Springs, MS 38635
662-252-3707